

639 WALLER STREET

SAN FRANCISCO, CA 94117

Estimated Total Finished
Square Footage: 2,555 SQ FT

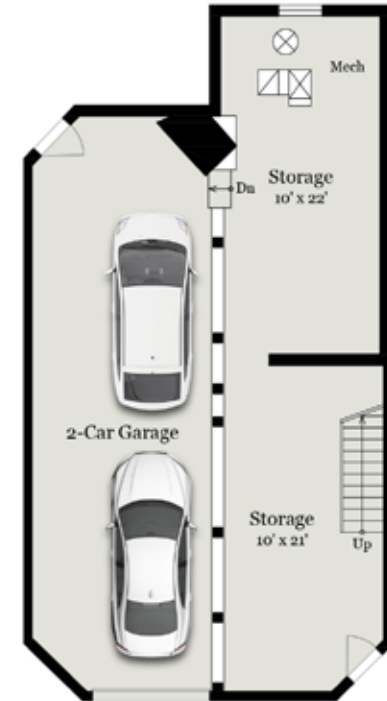
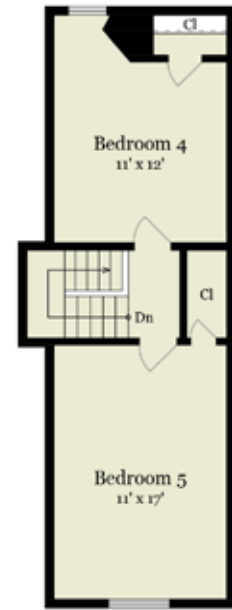
Above-Grade: 2,555 SQ FT Below-Grade: N/A

Plus 455 SQ FT 2-Car Garage on Lower Level

Plus 535 SQ FT Storage on Lower Level

Calculated per ANSI Standard Z765-2003.

* Estimated Total Finished & Unfinished Square Footage: 3,545 SQ FT



All measurements are approximate. While deemed reliable, no information on these floor plans should be relied upon without independent verification.

Sandy Arata Gandolfo
415.706.5633
SandyG@RealEstateSF.com
Lic# 01182908